

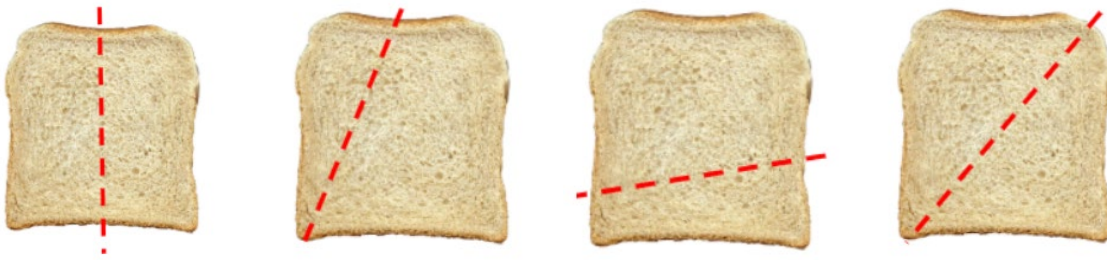
Maths

To find half of a quantity

In this lesson you will be finding half of an amount. You will be splitting the whole into two equal parts.

Do now

Circle the image that shows the bread sliced in half.



Independent task

Can you help Anansi and Turtle to share the food evenly in half?

Count the items in total and write it in the **whole**. Then share the food evenly in **parts** of the part whole model.

1)

A part-whole model for sharing food. On the left, a large box contains 1 blue spider (Anansi) and 3 bananas. On the right, a large box contains 1 blue spider and 1 green turtle (Turtle). In the center, a box labeled 'whole' is connected to two boxes labeled 'parts'.

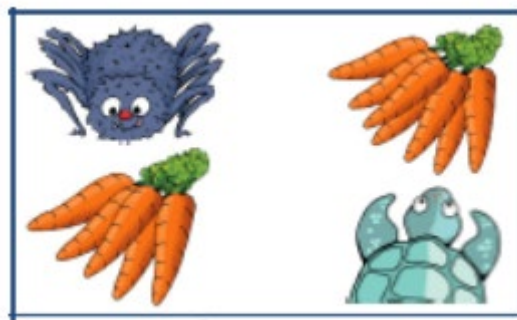
2)

A box containing 1 large chocolate bar, 2 small chocolate bars, 1 blue spider, and 1 green turtle. To the right is a diagram with a central box connected to two other boxes, which are then connected to a spider and a turtle respectively.

3)

A box containing 1 blue spider, 10 small round cookies, and 1 green turtle. To the right is a diagram with a central box connected to two other boxes, which are then connected to a spider and a turtle respectively.

4) Do Anasi and Turtle have an equal amount? Explain how you know?



Writing

For our writing today you will be writing our own version of '**Where teachers keep their pets**'.

You need to finish the line with an animal that rhymes with the teacher.

The second line needs to say where the animal is, this should rhyme with the animal itself.

If you get stuck looking for a rhyme use the online rhyming dictionary with an adult.

www.rhymezone.com

I have attached some animals to get you started.



cow



bat



cat



wren



dog



frog



drake



snake



gnat



horse

Example:

Mr Pow has a cow

That sleeps in a bed somehow

Independent task

Mr Pow has a _____

Mrs Pratt has a _____

Miss Ben has a _____

Mr Hog has a _____

Mrs Lake has a _____

Miss Blatt has a _____

Mr Morse has a _____

Science



Knowledge Quiz 3.6

1. Fish are:

warm blooded

cold blooded

2. Circle 3 characteristics that fish have:

wings

scales

fins

gills

3. Circle the fish below.



4. True or False: fish lay eggs.

true

false

5. Match the fish to the correct name.

eel

tuna


goldfish



Can we compare and contract animals from different categories?

Key Knowledge	Key Words
<ul style="list-style-type: none"> • Animals from different categories can share similar characteristics, for example, <ul style="list-style-type: none"> - mammals, fish, birds, amphibians and reptiles are all vertebrates. - reptiles, amphibians and fish are all cold-blooded. - amphibians, reptiles, fish and birds all lay eggs. - birds and mammals are warm blooded. 	<ul style="list-style-type: none"> • reptiles • amphibians • mammals • fish • birds • warm blooded • cold blooded • vertebrate

Look at the teaching video on DB primary before completing this task



	Warm/cold blooded	Where they live	Reproducing	Skin
Mammals	Warm blooded	On land	Give birth	Skin
Amphibians	Cold blooded	On land and in water	Lay eggs	Soft skin
Reptiles	Cold blooded	On land and in water	Lay eggs	Scales
Birds	Warm blooded	On land and in the air	Lay eggs	Feathers
Fish	Cold blooded	In water	Lay eggs	Scales

Use the table above and write a sentence about the characteristic of each animal category.

Example: Mammals are warm blooded animals that mostly live on land. Mammals give birth to live young and have skin.

Independent task

Mammals are

Amphibians are _____

Reptiles are _____

Birds are _____

Fish are _____

PSHE

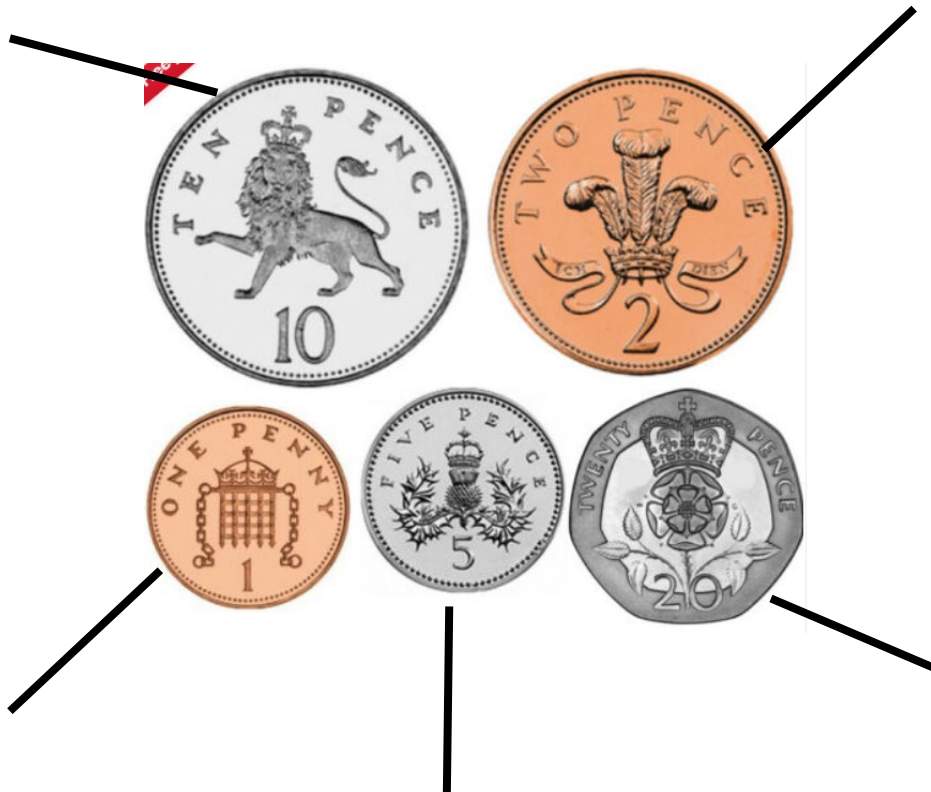
This half term we will be thinking about money.

Today we will think about what money is.

We use money to exchange for an item or for a service.

Money comes in different forms. Coins, notes, cards.

Label the different types of money below.



Name each note below.

